



Installation Instructions

Kit Number: 1205625
Installation Instructions: Instructions, ADA Glacier Upgrade

Date: 01/26/2011
Rev.: C

Product: ADA Glacier
Subject: ADA Glacier Upgrade kit
Purpose: Contents of the ADA Glacier upgrade kit

ECN: 58427
Rev. Date: 08/1/2021

Parts List		
Quantity	Part Number	Description
1	1206046	INSTLL INSTR, ADA GLACIER UPGRADE
1	1204981	PNT, CONTROL PANEL, BLUE, ADA
1	1203253	ASY, COIN INSERT CHUTE, GLACIER ADA
1	1203034	LEVER, COIN RETURN, GLACIER, ADA
1	1219115	W/A COIN BAG CHUTE, ADA GLACIER
1	1212508	ASY, COIN RETURN CHUTE, GLAC, ADA
1	1203057	BARRIER PLATE, GLACIER, ADA
8	V800956	NUT 8-32 HEX STL MS & EXT,Ro
7	V802234	SPEED NUT, #10-32, AUVECO 0255
1	1122715	SHOULDER WASHER, NYLON, RoHS
1	390326	(K) SPRING SOLD OUT, RoHS
3	V801421	SCR 10-16 5/16 B CR HX TAP, R
1	1209262	ASY,MTG BRKT, COINAGE, ADA GLA

Procedure

- Step #1** Remove coinage and cover assy – See Figure 1 & Pic 1.
- Step #2** Remove Dex bracket – See Figure 1 & Pic 2.
- Step #3** Remove coin bag chute assy – See Figure 1 & Pic 3.
- Step #4** Remove nuts from water station latch side – See Figure 1 & Pic 4.
- Step #5** Remove door seal – See Figure 1 & Pic 5.
- Step #6** Remove nuts from bottom of water station – See Figure 1 & Pic 6.
- Step #7** Remove bottom seal – See Figure 1.
- Step #8** Remove the reflector. – See Figure 1 & Pic 7.
- Step #9** Remove nuts from top of water station – See Figure 1 & Pic 8.
- Step #10** Remove top seal (note: place Philips screwdriver through hole to hold water station in place) – See Figure 1 & Pic 9/10.

- Step #11** Remove nuts securing panel – See Figure 1 & Pic 11.
- Step #12** Remove bezel – See Figure 1.
- Step #13** Remove control panel – See Figure 1 & Pic 12.
- Step #14** Remove coin return chute assembly – See Figure 1.
- Step #15** Remove coin insert assembly – See Figure 1.
- Step #16** Save the coin return bezel, coin insert bezel, and the coin insert plate– See Figure 1.

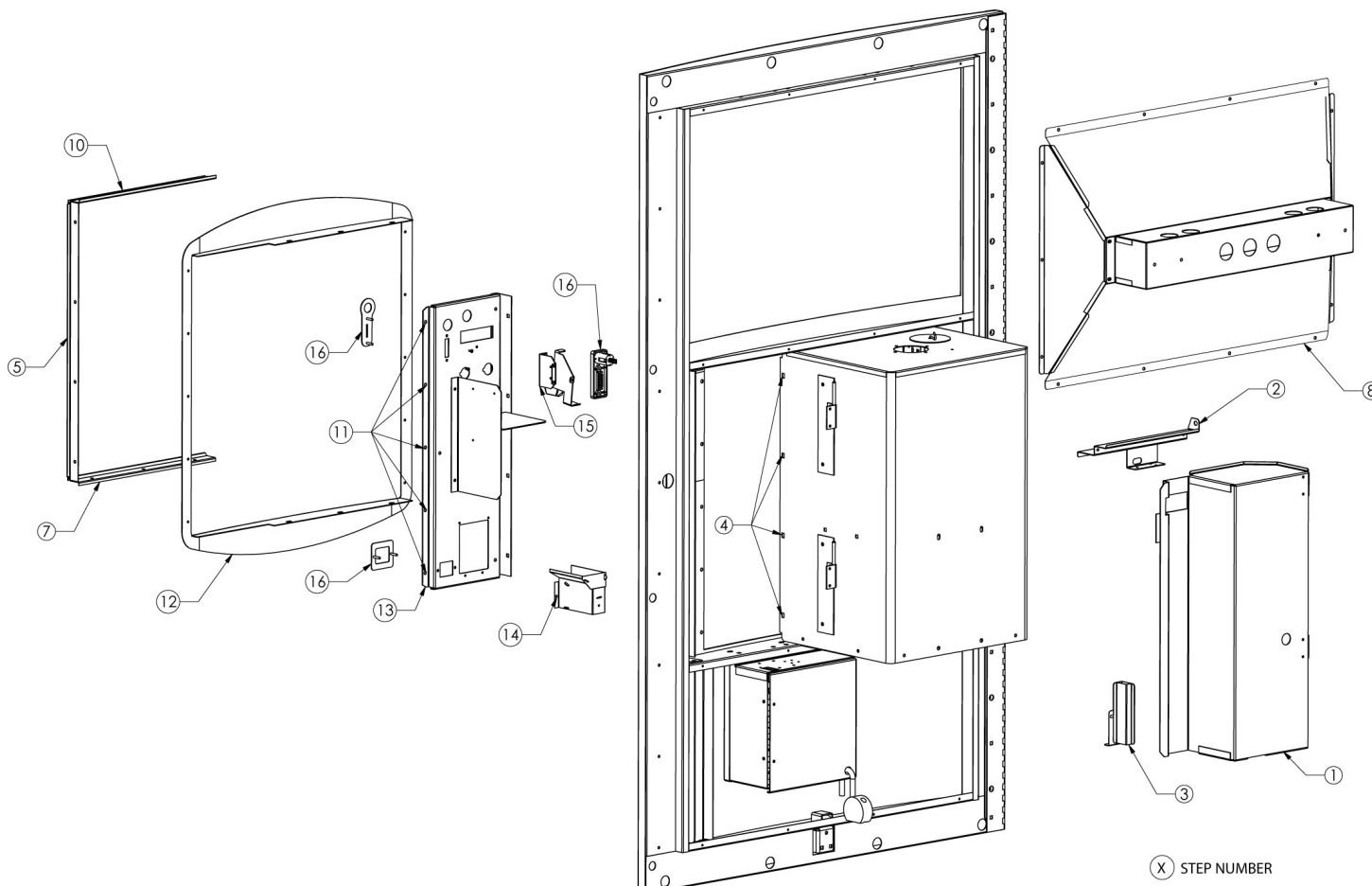


FIGURE 1

- Step #17** Install control panel – See Figure 2.
- Step #18** Install bezel – See Figure 2.
- Step #19** Secure control panel with nuts – See Figure 2.
- Step #20** Install top seal (note: Align holes with Philips screwdriver) – See Figure 2.
- Step #21** Secure top seal to water station with nuts – See Figure 2.
- Step #22** Install bottom seal (note: Align holes with Philips screwdriver) – See Figure 2.
- Step #23** Secure bottom seal to water station with nuts – See Figure 2.
- Step #24** Install door seal with nuts – See Figure 2.
- Step #25** Secure door seal with nuts – See Figure 2.
- Step #26** Install new coin return chute assy (reuse coin return bezel) – See Figure 2.

- Step #27** Install new coin bag chute assy – See Figure 2.
- Step #28** Install new coin insert assy (reuse coin insert bezel and coin insert plate) – See Figure 2.
- Step #29** Install new barrier plate – See Figure 2.
- Step #30** Install the new Coinage Mounting bracket – See Figure 2.
- Step #31** Reinstall the Reflector – See Figure 2.
- Step #32** Reinstall Dex bracket – See Figure 2.
- Step #33** Rework coinage/DBV door – using sheet metal shears, shear away 2.00 inches from the bottom flange. See Figure 3 (Creates clearance for the new coin return chute assy)
- Step #34** Reinstall coinage / DBV door – See Figure 2.

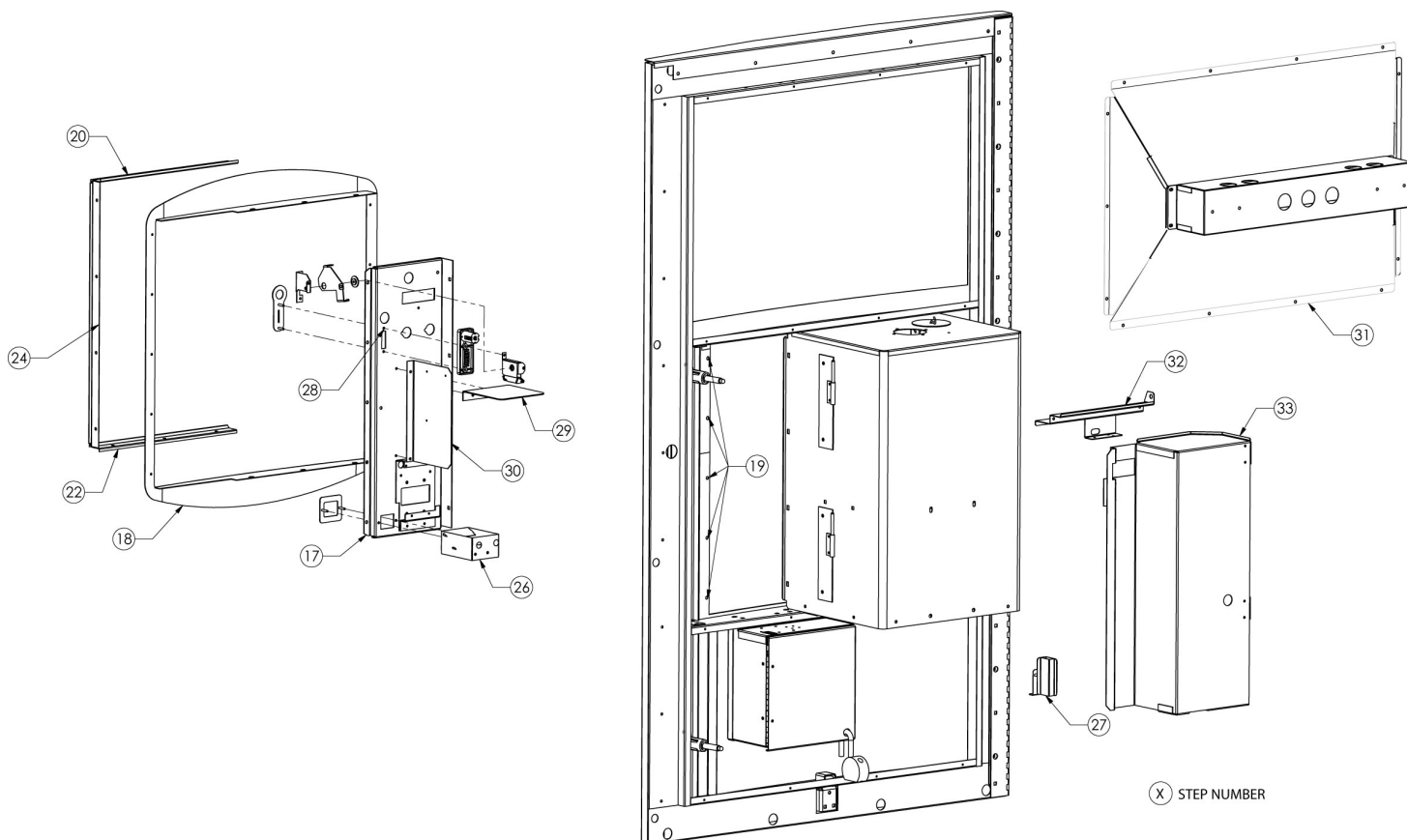


FIGURE 2



Glacier Pic. 1



Glacier Pic. 2



Glacier Pic. 3



Glacier Pic. 4



Glacier Pic. 5



Glacier Pic. 6



Glacier Pic. 7



Glacier Pic. 8



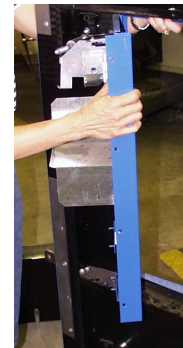
Glacier Pic. 9



Glacier Pic. 10



Glacier Pic. 11



Glacier Pic. 12

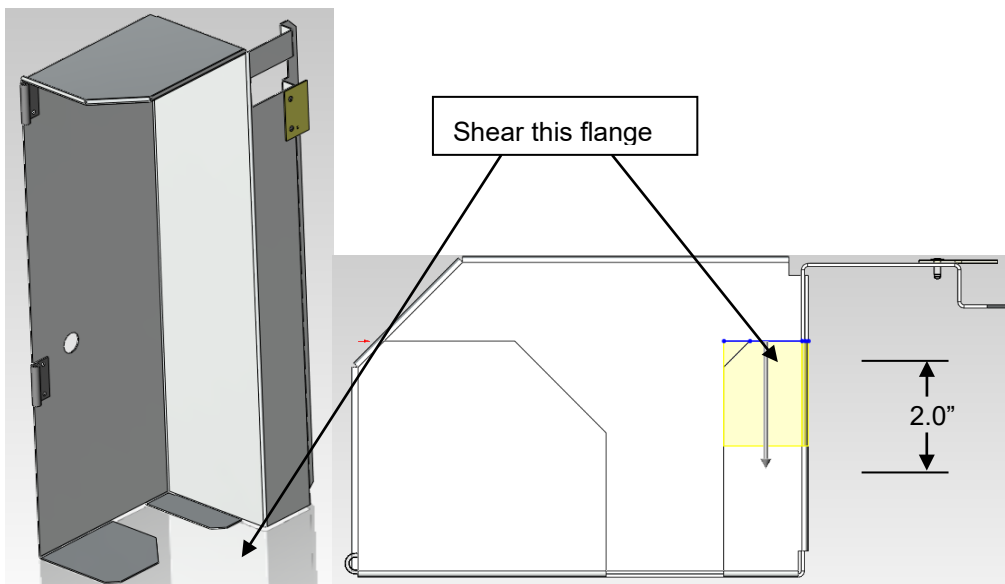


FIGURE 3